



MONTHLY REPORT

UNIVERSITY OF RICHMOND
WELL-BEING CENTER & QUEALLY
ATHLETICS CENTER

JANUARY 2020

Barton Malow Company

Authored by: Eric Follo

TOP ACTIVITIES FOR JANUARY

- Masonry installation at west/east gable and south elevation
- Continued air barrier installation across south elevation
- Continued flat roof installation
 - Spider Hall complete. Terrace roofing in progress, with Mind-Body to follow
- Continued interior wall framing at all levels
- Continued interior MEP rough-ins
- Terrace skylight delivered and installed
- Began metal wall panel installation at west and north exterior court walls
- Began exterior storefront installation at west Spider Hall
- Stair installation in progress
- Weinstein opening demolition and temporary infill complete
- Concrete topping slab poured in Millhiser restroom/recruiting spaces
- Completed Robins Terrace permanent duct tie-in

CONTRACTORS ON SITE

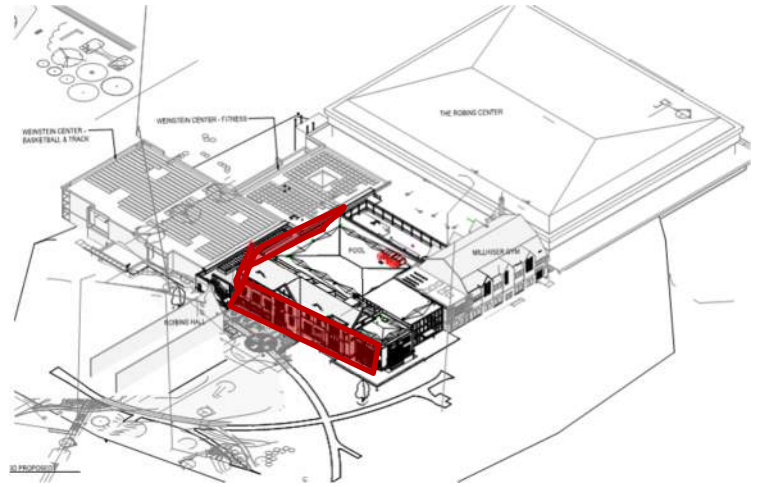
CONTRACTOR	TRADE
ETEC	Mechanical & Plumbing
Commercial	Electrical
CT Purcell	Utilities & Earthwork
Piedmont	Concrete
Masonomics	Masonry
Atlantic Constructors	Fire Suppression
Bay	Waterproofing
Ocean Drywall	Framing & Drywall
Roof Services	TPO & Slate Roofing
WH Stovall	Metal Wall Panel
Architectural Systems of VA	Skylight
Rusty's Welding	Metal Stairs
MP Barden	Painting
Jefco	Storefront

AERIAL DRONE PHOTO

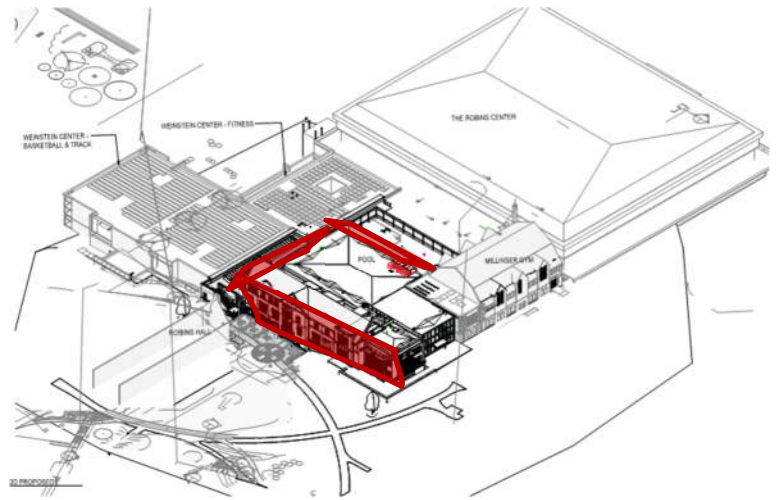


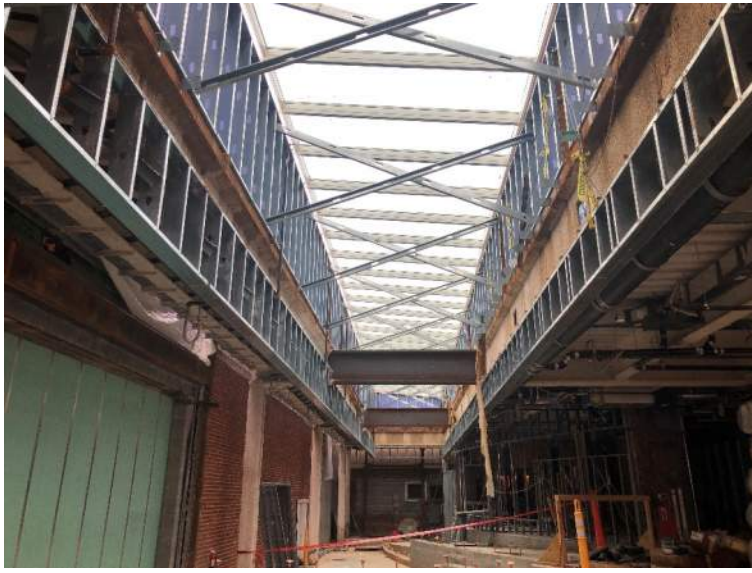
PROGRESS PHOTOS

Exterior Progress

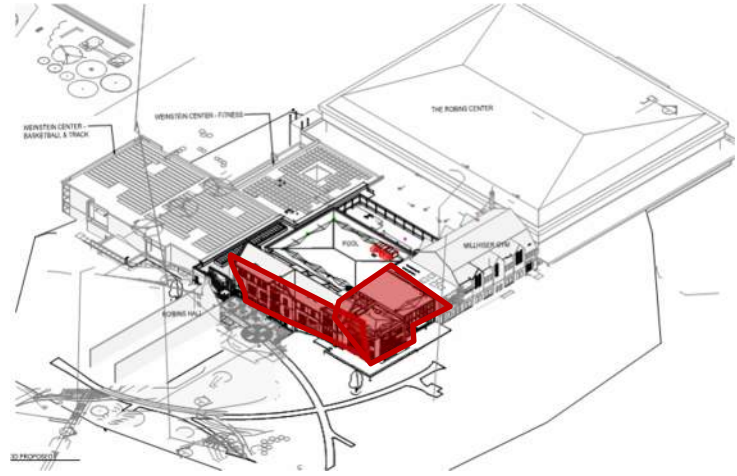


Exterior Progress Continued

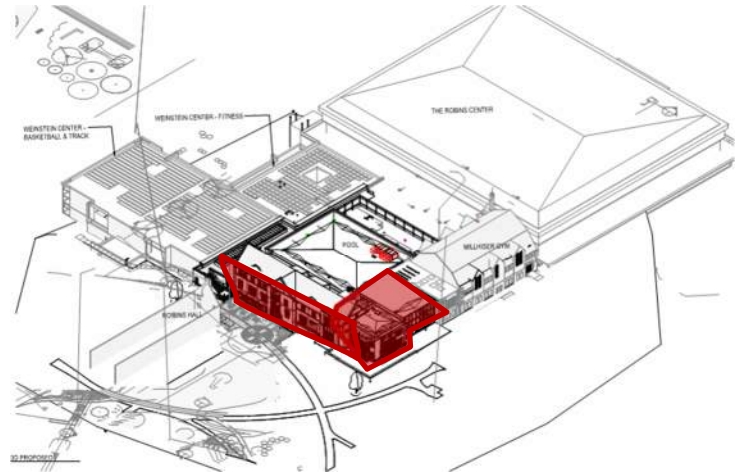




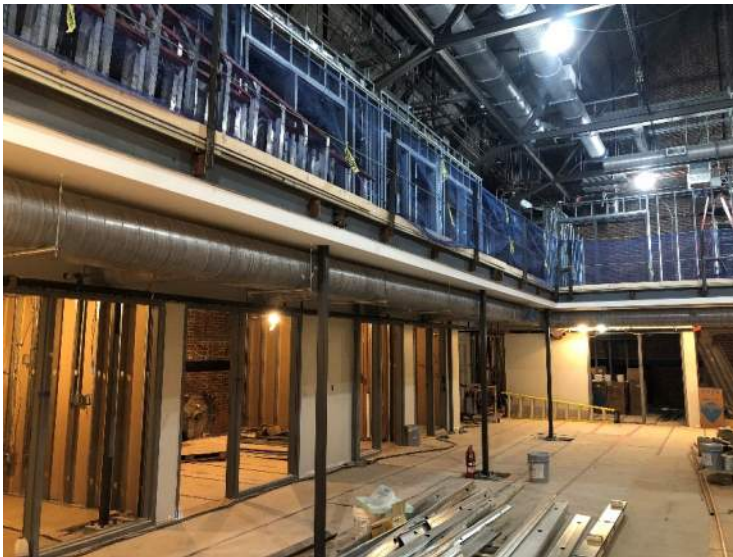
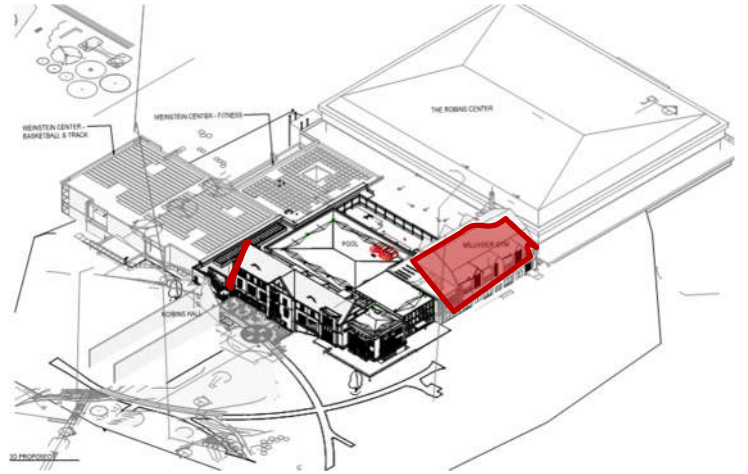
Interior Progress



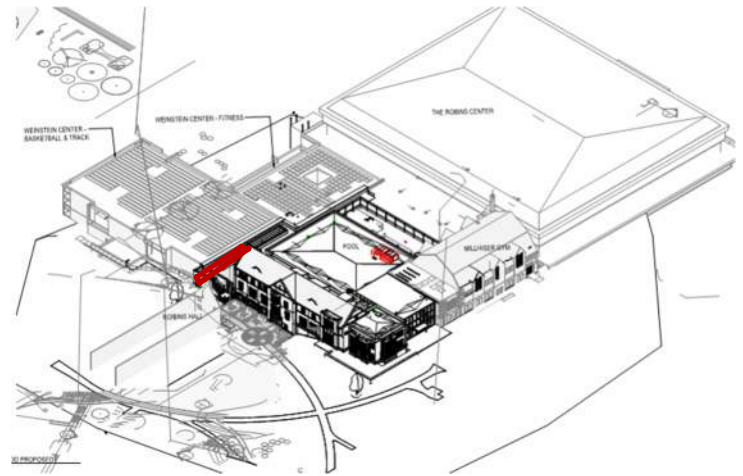
Interior Progress Continued



Millhiser Progress



Weinstein Opening Temporary Infill



TOP ACTIVITIES FOR FEBRUARY

- Complete masonry at east and west gable ends
- Continue masonry installation at south elevation
- Complete Terrace roofing installation
- Install flat roof over Mind-Body
- Complete metal wall panels at west and north exterior court walls
 - Install panels at Terrace skylight
- Install storefront windows at north court wall
- Continue stair installation
- Continue interior framing and MEP rough-in
 - Begin in-wall inspections