



# MONTHLY REPORT

UNIVERSITY OF RICHMOND  
WELL-BEING CENTER & QUEALLY  
ATHLETICS CENTER

DECEMBER 2019

---

**Barton Malow Company**

*Authored by: Eric Follo*

---

# TOP ACTIVITIES FOR DECEMBER

- Exterior wall framing/sheathing and air barrier
- Spider Hall roofing installation
- Brick installation at west terrace-level elevation
- Slate roof underlayment installation completed
- Continued interior MEP rough-ins and framing in expansion and Millhiser
- Began Millhiser drywall installation and finishing at priority areas
- Completed remaining concrete slab pours at Spider Hall bridge and Team/Locker rooms
- Installation of CMU block wall between Spider Hall and Mind-Body
- South elevation backfill
- Demolition of new Weinstein opening

## CONTRACTORS ON SITE

CONTRACTOR	TRADE
ETEC	Mechanical & Plumbing
Commercial	Electrical
CT Purcell	Utilities & Earthwork
Piedmont	Concrete
Masonomics	Masonry
Atlantic Contractors	Fire Suppression
Bay	Waterproofing
Ocean Drywall	Framing & Drywall
Roof Services	TPO & Slate Roofing

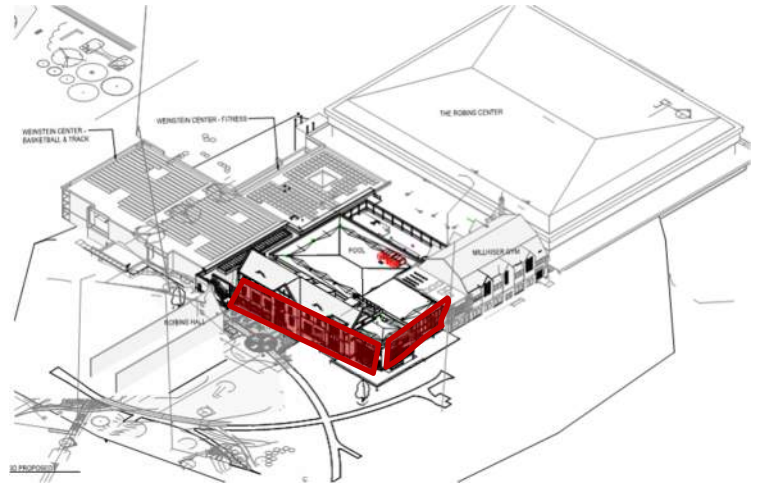
---

AERIAL DRONE PHOTO

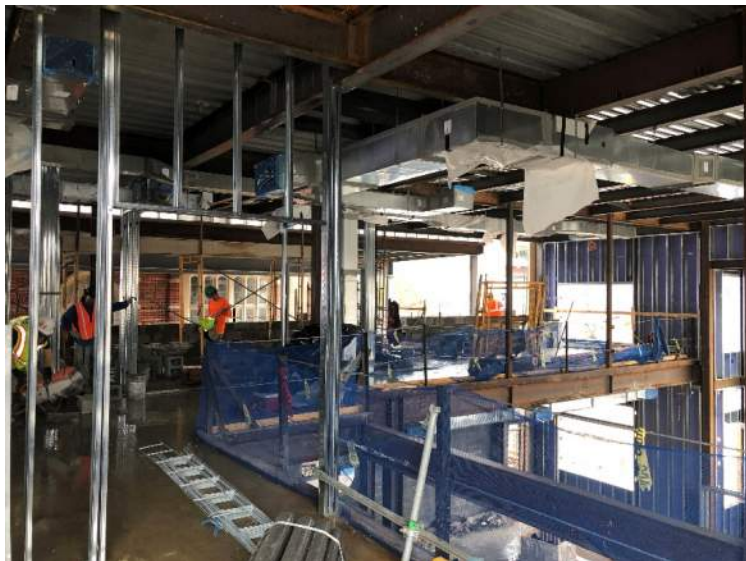
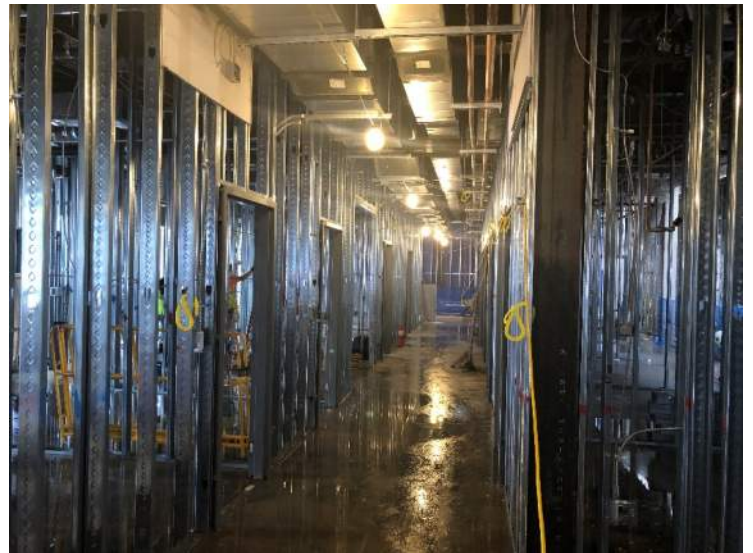
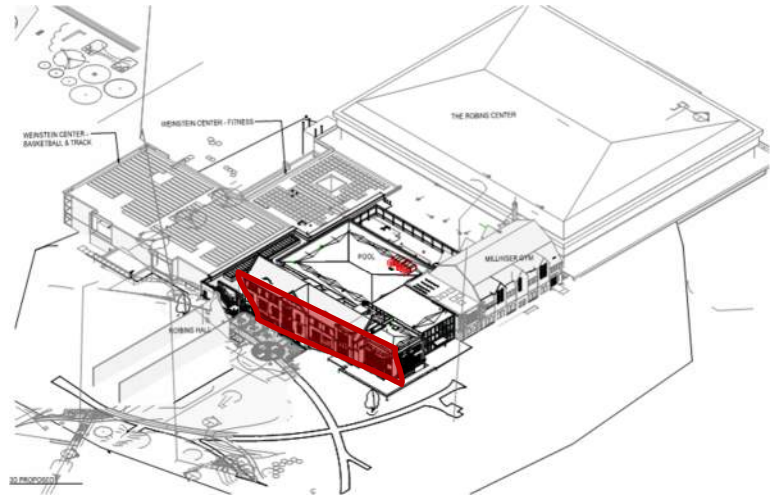


# PROGRESS PHOTOS

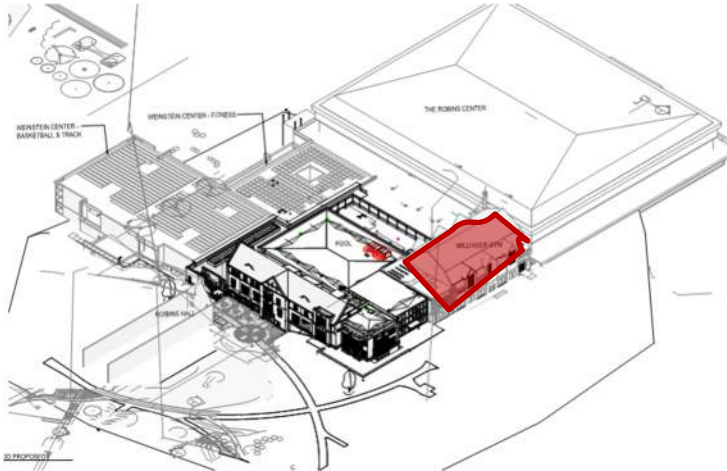
## Exterior Progress



## Expansion Interior MEP Rough-in and Framing

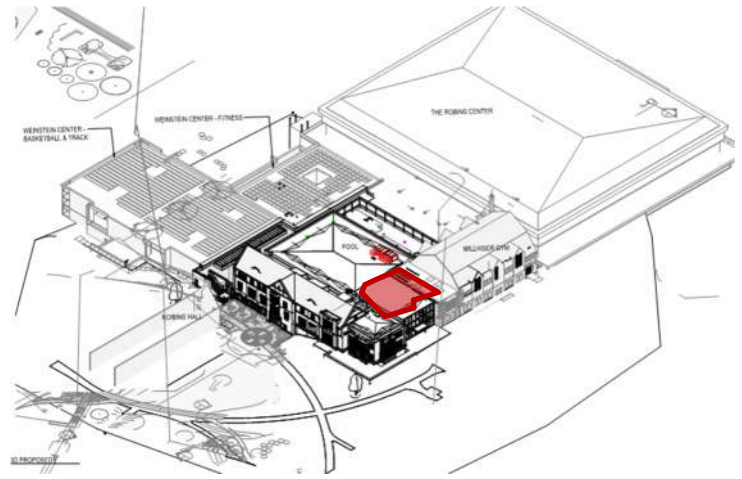


# Millhiser Progress

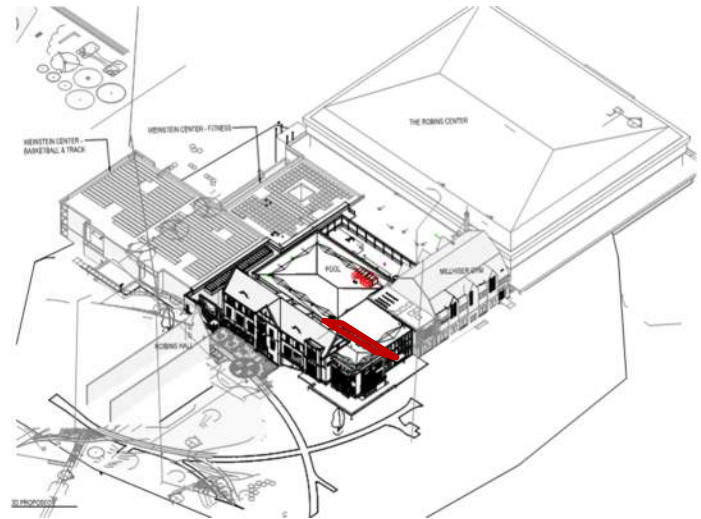


---

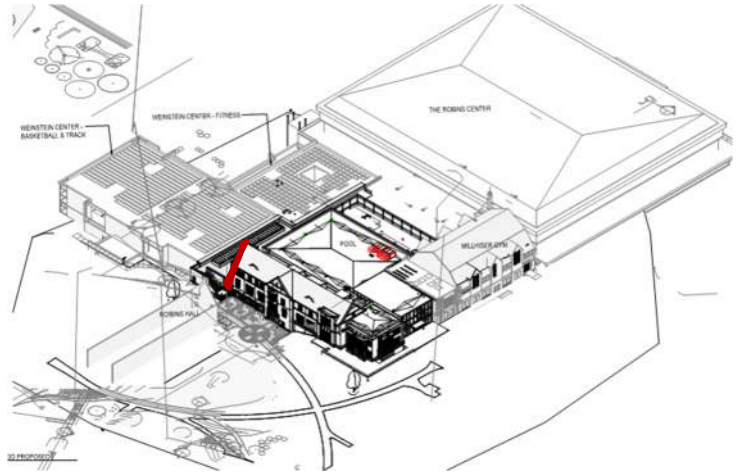
## Spider Hall Roofing



## Spider Hall CMU Wall

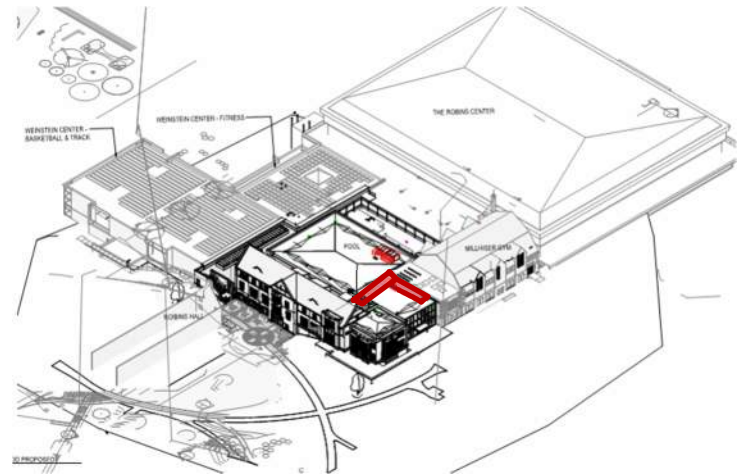


## West Elevation Masonry





## Spider Hall Bridge Concrete



## Weinstein Opening Demo

